



NATA LIGHTING CO.,LTD
www.nata.cn
Email:info@nata.cn
Tel:+86 0750-377 0000(10 lines) Fax:+86 0750-377 1111
Address:380JinOu Road,Gaoxin Zone,Jiang Men City,Guangdong,China

Nata

LumCAT: 6723-A
Luminaire: TE 2213480-1+92.76.365.00
Report No: GC2017033004
Test No: NT-0010
LampCAT: LUMILEDS LUXEON CoB 1216
Lamp flux(lm): 3850.0
Number of Lamps: 1
Length(mm): 160
Phm Type: C

Voltage(V): 34.0000
Current(A): 0.8000
Power (W): 27.2000
PF: 0.0000
Ballast type: DC
Width(mm): 160
Height(mm): 0

Photometric Results

Lumens(lm): 3540.17
Efficiency(%): 91.95%
Lumens(lm)/Power(W): 130.15
Central intensity(cd): 2333.566
Maximum intensity(cd): 2333.566
Angle of maximum intensity: C=0.0 γ =0.0
Beam Angle(50%Imax): [C0/180]Total=81.6
 [C90/270]Total=81.6
Field angle(10%Imax): [C0/180]Total=101.8
 [C90/270]Total=101.8
Maximum s/h(1/2): C0_180=1.19 C90_270=1.19
Maximum s/h(1/4): C0_180=1.17 C90_270=1.17
Up flux rate of lamp(%): 0.00%
Down flux rate of lamp(%): 91.95%
Up flux rate of LUM(%): - -
Down flux rate of LUM(%): 100.00%
CIE Type : Direct lighting
Output flux ratio in π solid angle : 98.267%

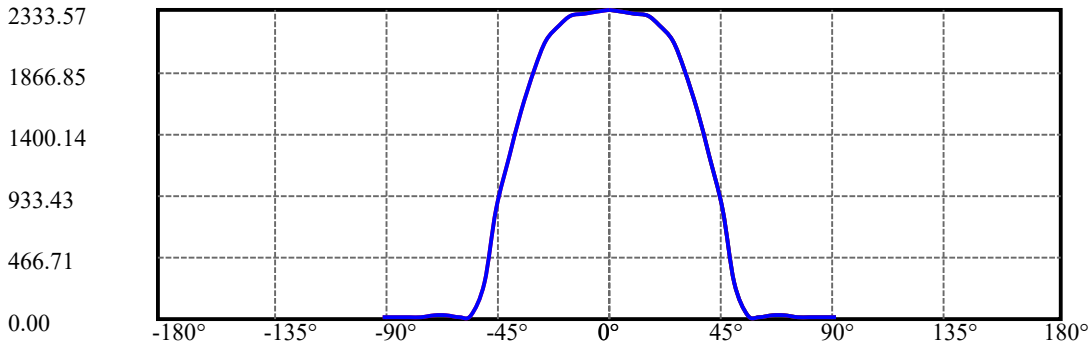
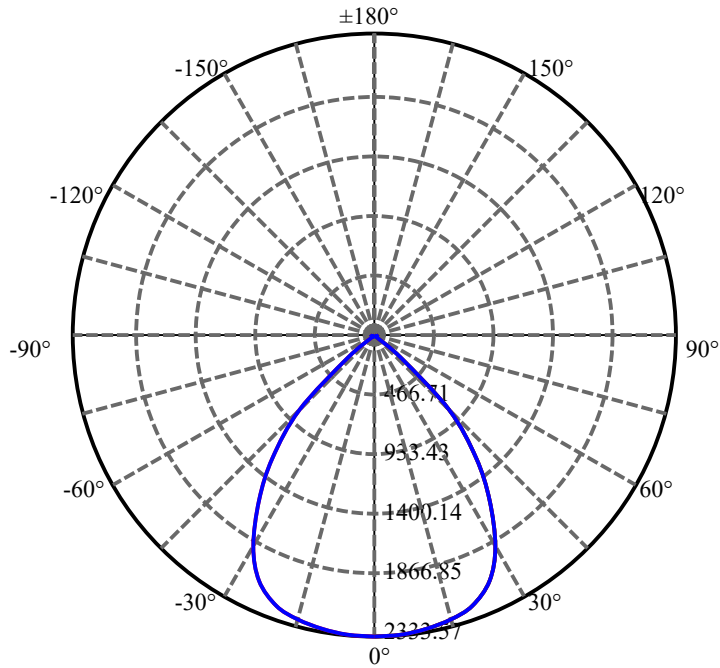
$\gamma(^{\circ})$	Average I(cd)	Zonal F(lm)	Sum F(lm)	Eff Flux(%)	Eff Sum(%)
0.0	2333.566	0.000	0	.000%	.000%
5.0	2324.137	55.682	55.682	1.446%	1.573%
10.0	2307.909	165.703	221.384	4.304%	6.254%
15.0	2282.914	272.325	493.709	7.073%	13.946%
20.0	2224.072	371.439	865.148	9.648%	24.438%
25.0	2100.402	453.558	1318.705	11.781%	37.250%
30.0	1886.659	504.566	1823.271	13.106%	51.502%
35.0	1566.423	508.491	2331.762	13.208%	65.866%
40.0	1233.332	467.118	2798.88	12.133%	79.061%
45.0	824.373	381.001	3179.881	9.896%	89.823%
50.0	278.957	222.944	3402.825	5.791%	96.120%
55.0	23.495	65.763	3468.588	1.708%	97.978%
60.0	20.756	10.229	3478.817	.266%	98.267%
65.0	26.344	11.450	3490.267	.297%	98.590%
70.0	26.234	13.313	3503.58	.346%	98.967%
75.0	20.467	12.207	3515.787	.317%	99.311%
80.0	15.774	9.697	3525.484	.252%	99.585%
85.0	13.227	7.880	3533.365	.205%	99.808%
90.0	11.617	6.803	3540.167	.177%	100.000%

ZONAL LUMEN SUMMARY

Zone	Lumens	%Lamp	%Fixt
0-30	1823.27	47.36%	51.50%
0-40	2798.88	72.70%	79.06%
0-60	3478.82	90.36%	98.27%
0-90	3533.36	91.78%	99.81%
0-120	3533.36	91.78%	99.81%
0-180	3540.17	91.95%	100.00%
60-90	64.78	1.68%	1.83%
90-120	0.00	0.00%	0.00%
90-130	0.00	0.00%	0.00%
90-150	0.00	0.00%	0.00%
90-180	0.00	0.00%	0.00%
0-40.44	2832.13	73.56%	80.00%

ZONAL LUMEN SUMMARY

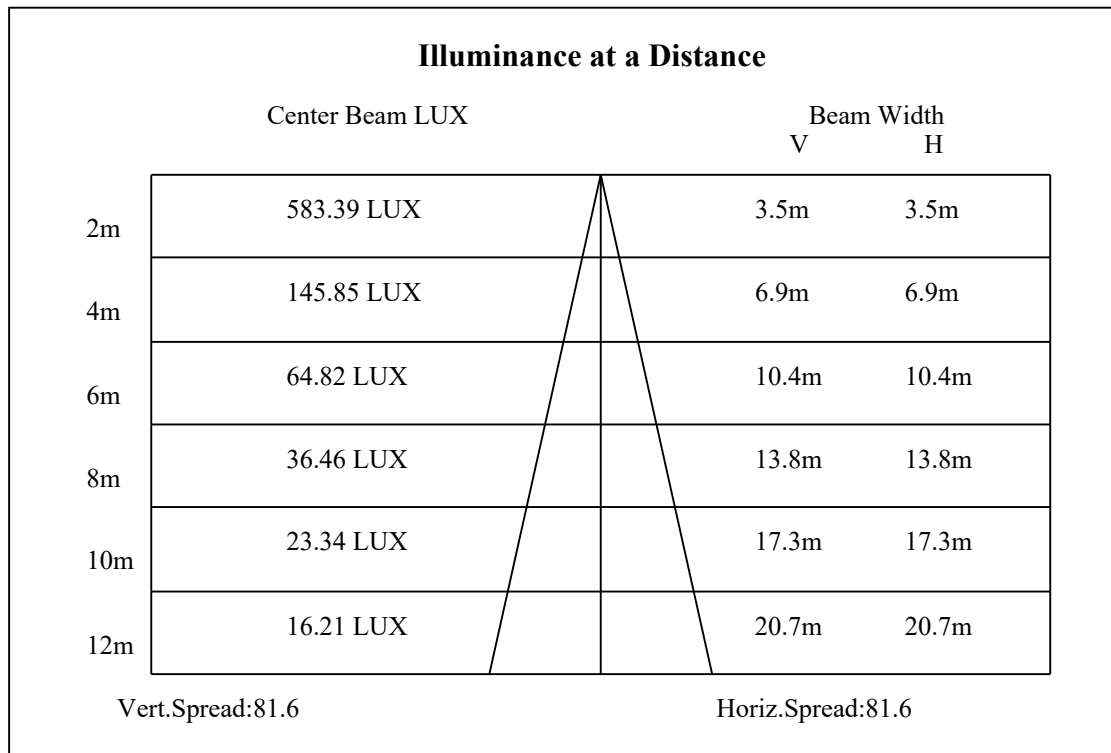
0-10	221.38
10-20	643.76
20-30	958.12
30-40	975.61
40-50	603.94
50-60	75.99
60-70	24.76
70-80	21.90
80-90	7.88
90-100	0.00
100-110	0.00
110-120	0.00
120-130	0.00
130-140	0.00
140-150	0.00
150-160	0.00
160-170	0.00
170-180	0.00

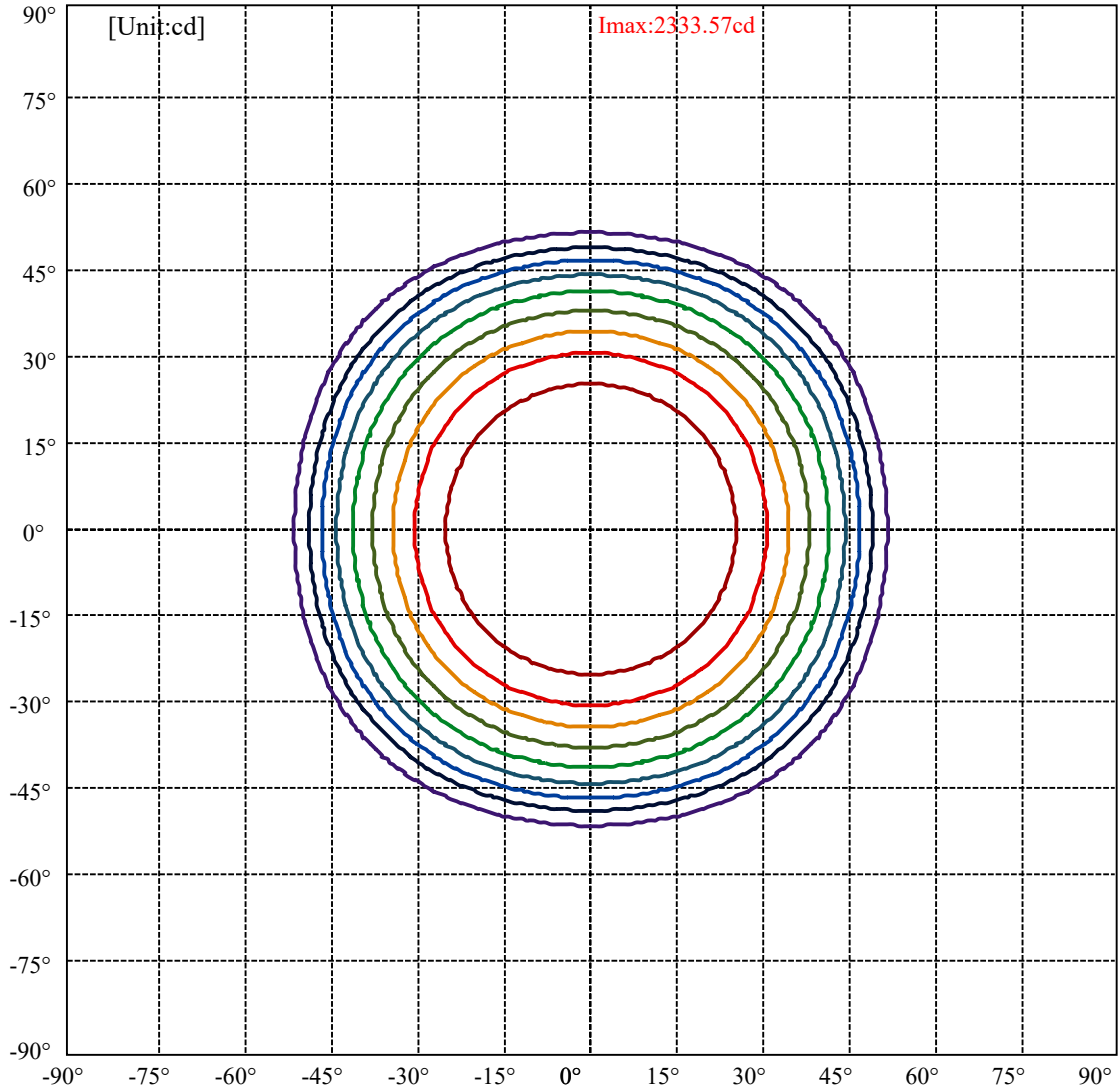


C0(Max): ———
C0/C180: ———
C90/C270: ———

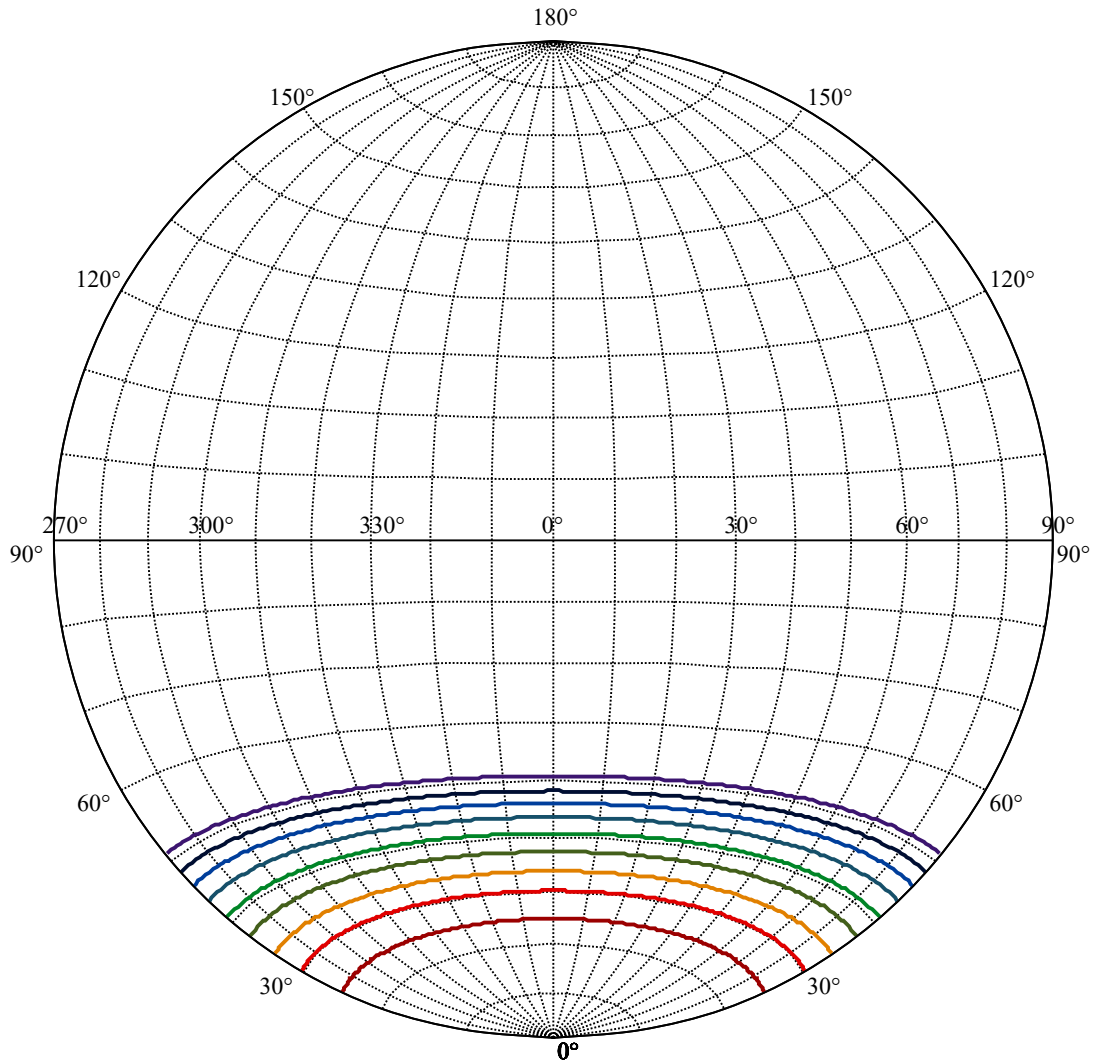
Field angle(10%Imax):C0/180Left:50.9 Right:50.9
:C90/270Left:50.9 Right:50.9

Beam Angle(50%Imax):C0/180Left:40.8 Right:40.8
:C90/270Left:40.8 Right:40.8





(10%Imax) 233.357	—
(20%Imax) 466.713	—
(30%Imax) 700.07	—
(40%Imax) 933.426	—
(50%Imax) 1166.78	—
(60%Imax) 1400.14	—
(70%Imax) 1633.5	—
(80%Imax) 1866.85	—
(90%Imax) 2100.21	—



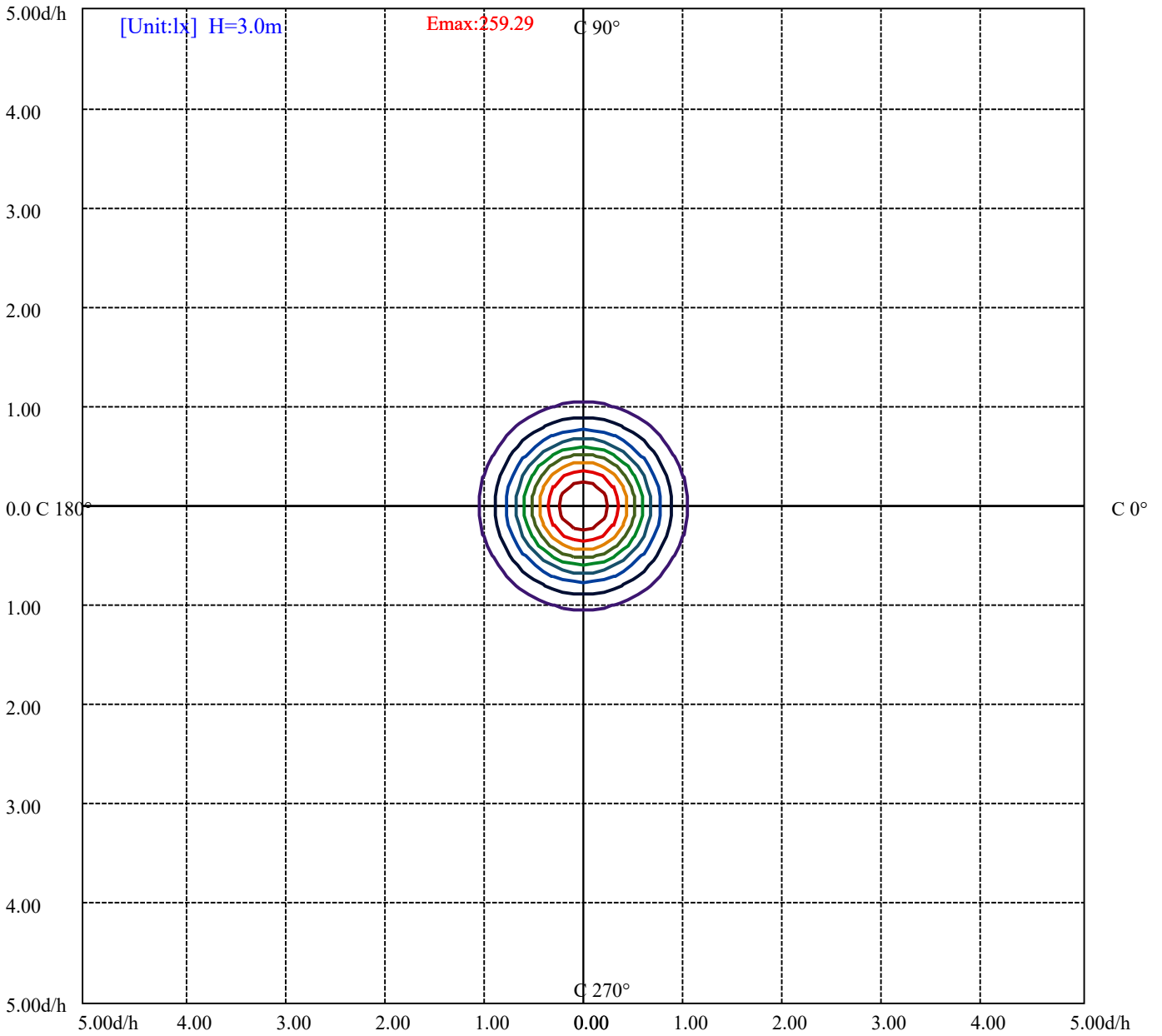
House

[Unit:cd]

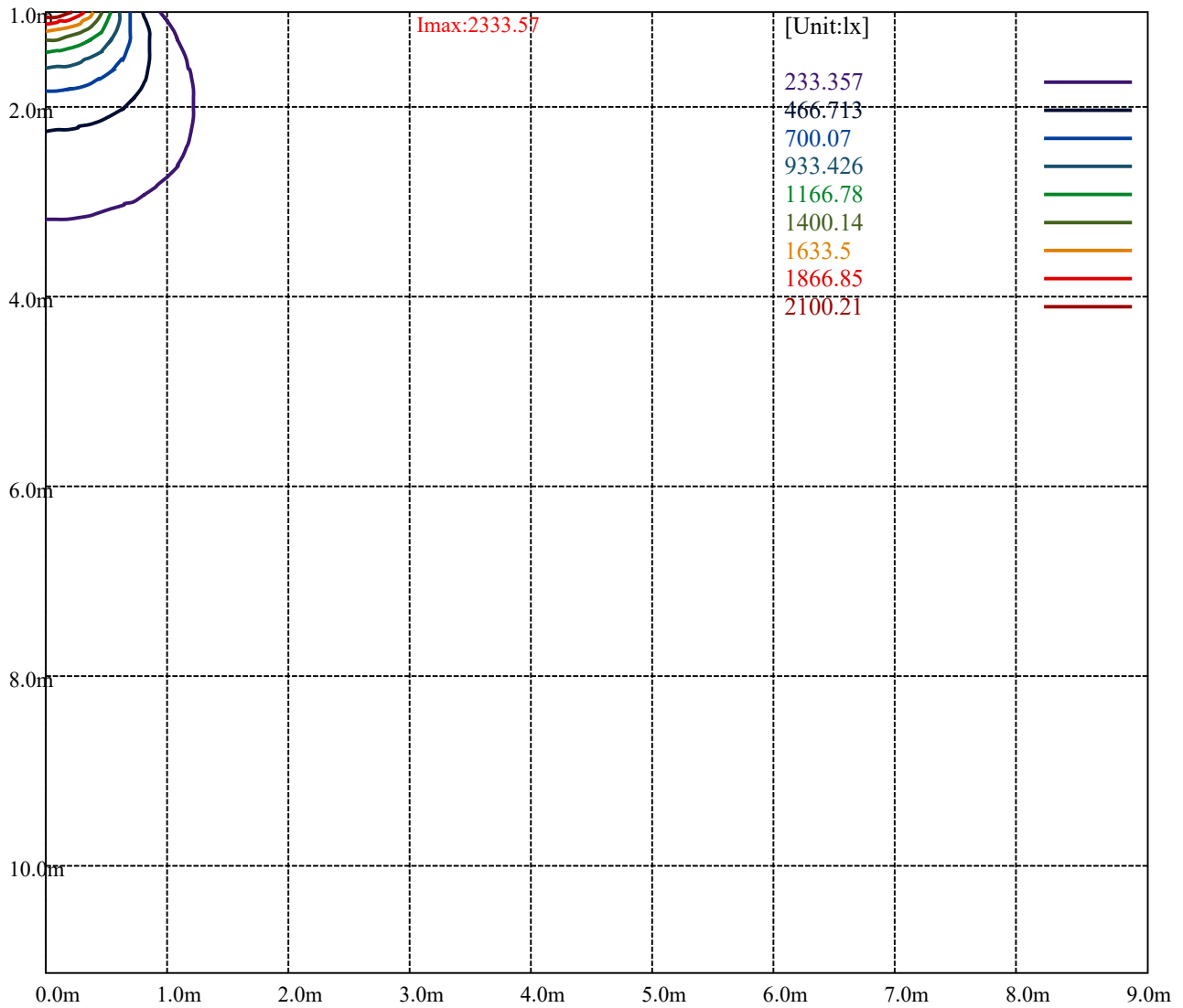
Road

Imax:2333.57

(10%Imax) 233.357	—
(20%Imax) 466.713	—
(30%Imax) 700.07	—
(40%Imax) 933.426	—
(50%Imax) 1166.78	—
(60%Imax) 1400.14	—
(70%Imax) 1633.5	—
(80%Imax) 1866.85	—
(90%Imax) 2100.21	—



- (10%Emax) 25.92855
- (20%Emax) 51.857
- (30%Emax) 77.78555
- (40%Emax) 103.714
- (50%Emax) 129.6422
- (60%Emax) 155.5711
- (70%Emax) 181.5
- (80%Emax) 207.4278
- (90%Emax) 233.3567



Luminance Table

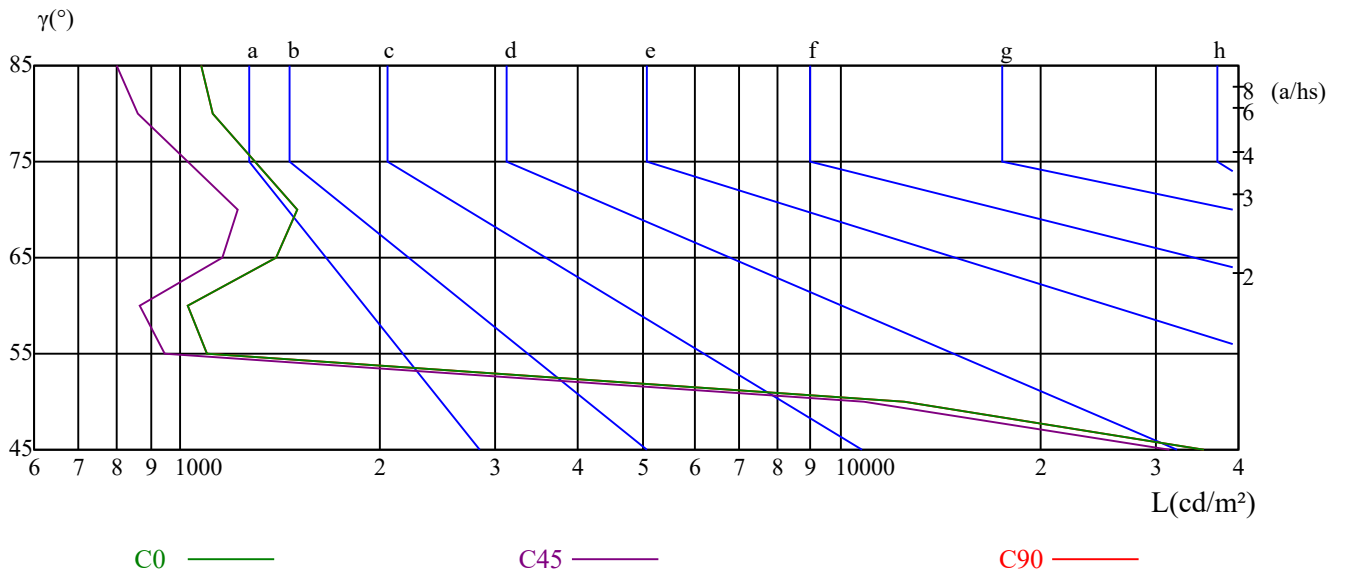
γ	45	50	55	60	65	70	75	80	85
C0	35490	12458	1099	1027	1395	1506	1294	1119	1078
C45	31393	10865	944	868	1157	1223	1025	861	800
C90	35490	12458	1099	1027	1395	1506	1294	1119	1078

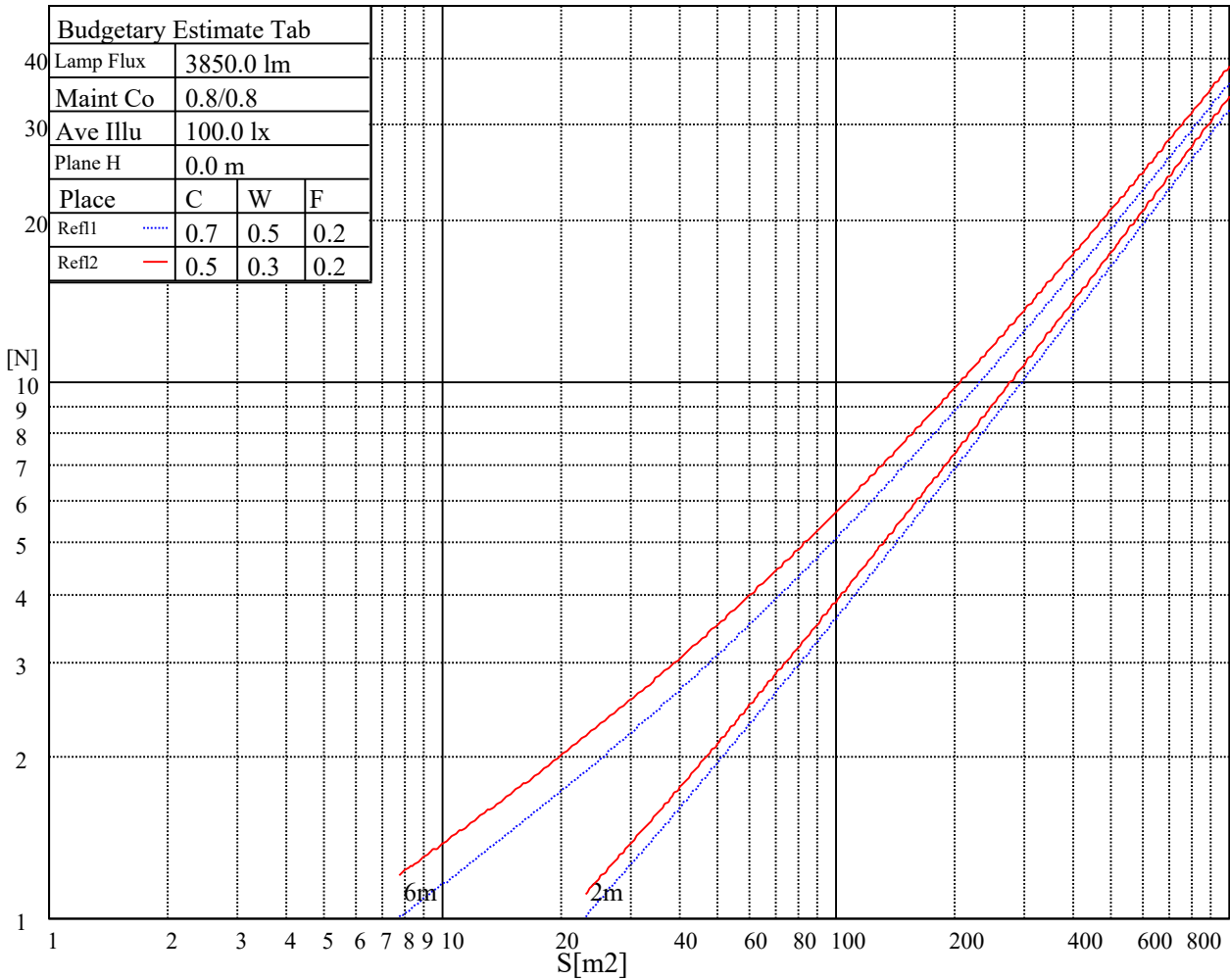
L(Hor)(65)	L(Ver)(65)	L45(65)	L(Hor)(75)	L(Ver)(75)	L45(75)	L(Hor)(85)	L(Ver)(85)	L45(85)
2771	2771	2771	3515	3515	3515	6745	6745	6745

Glare Table

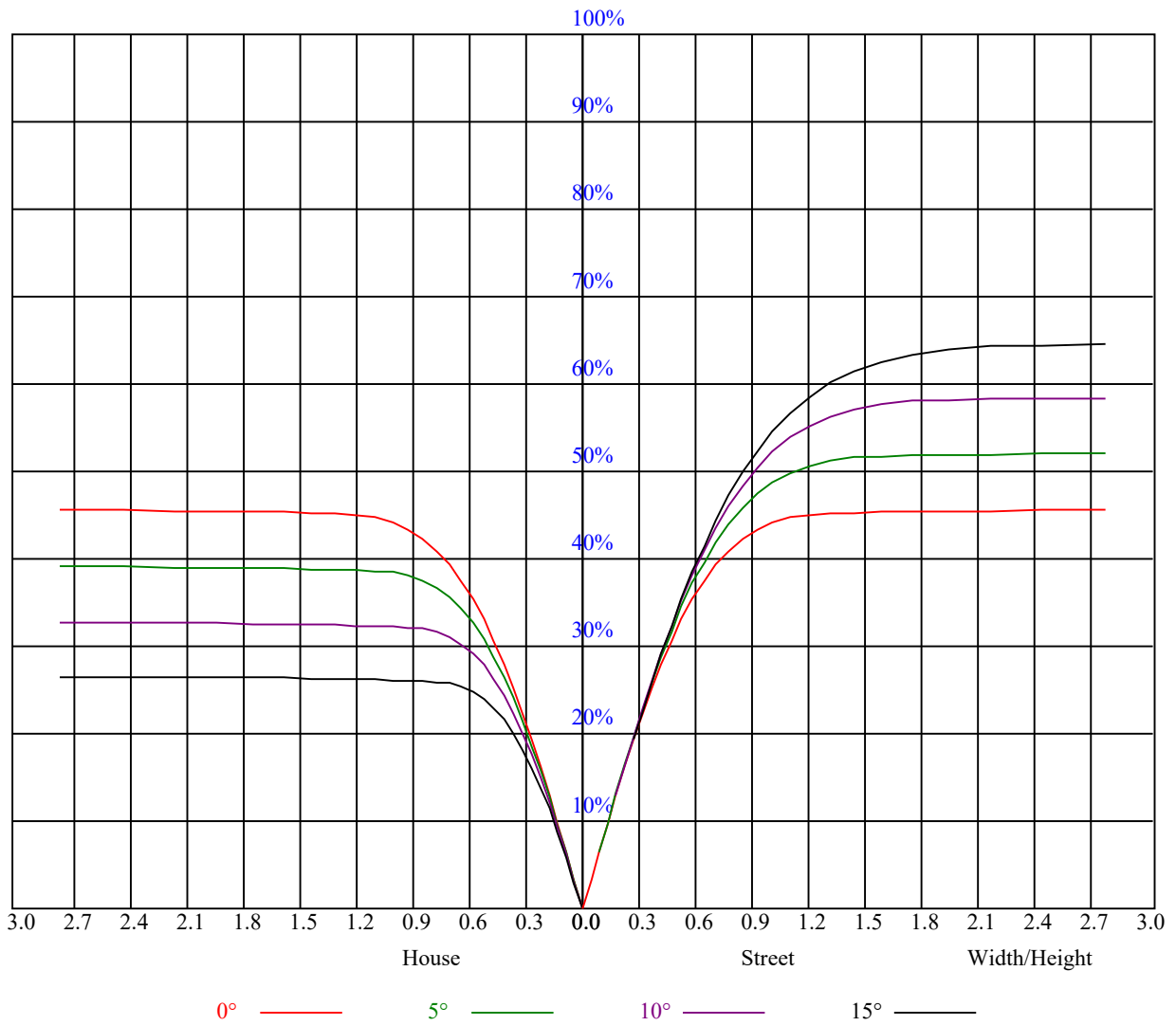
Glare	Quality	Service Values Illuminance(lx)							
1.15	A	2000	1000	500	<=300				
1.5	B		2000	1000	500	<=300			
1.85	C			2000	1000	500	<=300		
2.2	D				2000	1000	500	<=300	
2.55	E					2000	1000	500	<=300
		a	b	c	d	e	f	g	h

Luminance Limiting Curve





RHOCC	80			70			50			30			10			0
RHOW	50	30	10	50	30	10	50	30	10	50	30	10	50	30	10	0
RCR	COEFFICIENTS OF UTILIZATION RHOFC=20 CU															
0	1.09	1.09	1.09	1.07	1.07	1.07	1.02	1.02	1.02	0.98	0.98	0.98	0.94	0.94	0.94	0.92
1	1.01	0.98	0.96	0.98	0.96	0.94	0.95	0.93	0.91	0.91	0.90	0.88	0.88	0.87	0.86	0.84
2	0.92	0.88	0.84	0.91	0.87	0.83	0.87	0.84	0.81	0.85	0.82	0.80	0.82	0.80	0.78	0.76
3	0.85	0.79	0.75	0.83	0.78	0.74	0.81	0.77	0.73	0.78	0.75	0.72	0.76	0.73	0.71	0.69
4	0.78	0.72	0.67	0.77	0.71	0.67	0.75	0.70	0.66	0.73	0.69	0.65	0.71	0.67	0.65	0.63
5	0.72	0.65	0.61	0.71	0.65	0.61	0.69	0.64	0.60	0.67	0.63	0.59	0.66	0.62	0.59	0.57
6	0.66	0.60	0.55	0.65	0.59	0.55	0.64	0.59	0.55	0.63	0.58	0.54	0.61	0.57	0.54	0.52
7	0.61	0.55	0.50	0.61	0.55	0.50	0.59	0.54	0.50	0.58	0.53	0.50	0.57	0.53	0.49	0.48
8	0.57	0.51	0.46	0.56	0.50	0.46	0.55	0.50	0.46	0.54	0.49	0.46	0.53	0.49	0.45	0.44
9	0.53	0.47	0.43	0.52	0.46	0.42	0.51	0.46	0.42	0.51	0.46	0.42	0.50	0.45	0.42	0.41
10	0.49	0.43	0.39	0.49	0.43	0.39	0.48	0.43	0.39	0.47	0.42	0.39	0.47	0.42	0.39	0.37



Intensity data(cd)

C/\u03b3(\u00b0)	0.0	5.0	10.0	15.0	20.0	25.0	30.0	35.0	40.0
0.0	2333.84	2325.58	2311.82	2286.22	2227.03	2101.78	1883.20	1568.83	1249.23
45.0	2330.54	2324.48	2307.30	2284.29	2226.21	2102.60	1894.11	1562.50	1222.91
90.0	2331.64	2322.00	2305.21	2276.86	2216.85	2094.62	1875.22	1571.86	1238.27
135.0	2338.25	2324.48	2307.30	2284.29	2226.21	2102.60	1894.11	1562.50	1222.91
180.0	2333.84	2325.58	2311.82	2286.22	2227.03	2101.78	1883.20	1568.83	1249.23
225.0	2330.54	2324.48	2307.30	2284.29	2226.21	2102.60	1894.11	1562.50	1222.91
270.0	2331.64	2322.00	2305.21	2276.86	2216.85	2094.62	1875.22	1571.86	1238.27
315.0	2338.25	2324.48	2307.30	2284.29	2226.21	2102.60	1894.11	1562.50	1222.91
360.0	2333.84	2325.58	2311.82	2286.22	2227.03	2101.78	1883.20	1568.83	1249.23

C/\u03b3(\u00b0)	45.0	50.0	55.0	60.0	65.0	70.0	75.0	80.0	85.0
0.0	799.75	348.95	29.46	22.08	25.60	25.27	19.16	15.75	13.43
45.0	837.57	249.08	21.31	20.15	26.76	27.03	21.03	15.91	13.21
90.0	822.60	268.73	21.91	20.65	26.26	25.60	20.65	15.53	13.05
135.0	837.57	249.08	21.31	20.15	26.76	27.03	21.03	15.91	13.21
180.0	799.75	348.95	29.46	22.08	25.60	25.27	19.16	15.75	13.43
225.0	837.57	249.08	21.31	20.15	26.76	27.03	21.03	15.91	13.21
270.0	822.60	268.73	21.91	20.65	26.26	25.60	20.65	15.53	13.05
315.0	837.57	249.08	21.31	20.15	26.76	27.03	21.03	15.91	13.21
360.0	799.75	348.95	29.46	22.08	25.60	25.27	19.16	15.75	13.43

C/\u03b3(\u00b0)	90.0
0.0	11.40
45.0	11.67
90.0	11.73
135.0	11.67
180.0	11.40
225.0	11.67
270.0	11.73
315.0	11.67
360.0	11.40